



22 Beresford Street Balaclava NSW

4  2  2 

Nestled in a convenient location with easy access to Mittagong and the freeway, this beautifully presented home offers comfort, space, and practicality for the modern family. The heart of the home is the stylish kitchen, complete with a large island bench, 900mm stove, and an expansive walk-in pantry-ideal for those who love to cook and entertain. A separate media room provides the perfect retreat for movie nights or relaxation.

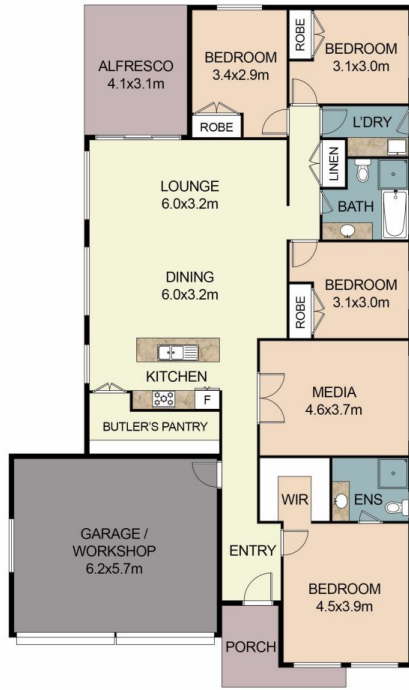
Step outside to discover a fully fenced, level yard with side access, perfect for storing a trailer, caravan or boat. A separate dog run ensures a pet-friendly space, while established gardens featuring roses, magnolias, and hydrangeas add charm and character.

Type : House
Land Size : 712 sqm
View : <https://www.allseasonsproperty.com.au/8262579>



Jessie Robertson
(02) 48 315 905

[For full version visit the website](https://www.allseasonsproperty.com.au)



FLOOR PLAN



SITE PLAN

Floor plan measurements are approximate and are for illustration purposes only.
Whilst all reasonable care has been taken in providing this information related companies and their representatives, consultants and agents accept no responsibility for the accuracy of any information contained herein or for any action taken in reliance thereon by any third party whether purchaser, potential purchaser or otherwise.

